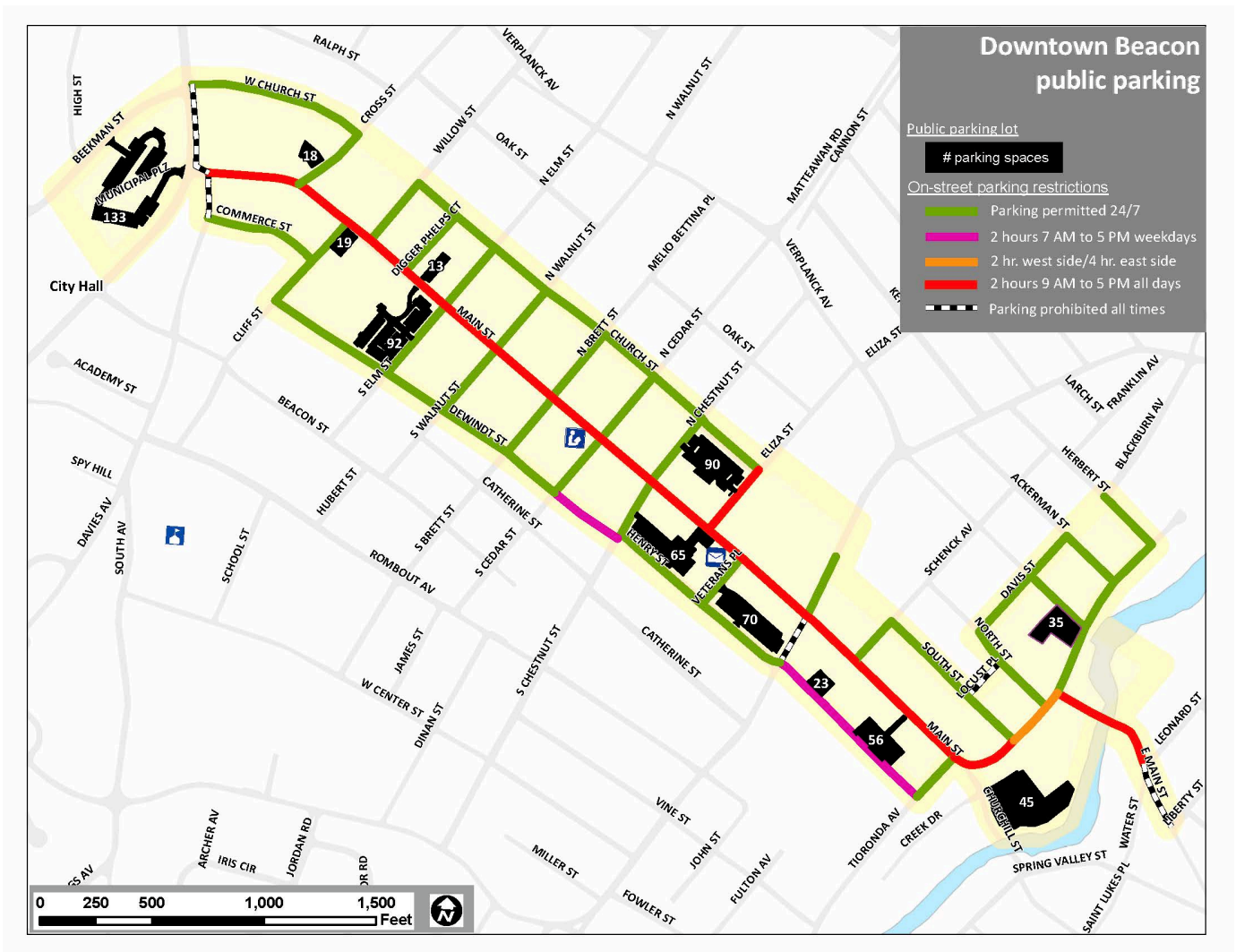


**§211-19.5. Twenty-four-hour parking limit. [Added 4-2-2001 by L.L. No. 4-2001; amended 5-19-2014 by L.L. No. 5-2014]**

Unless otherwise restricted by an appropriate sign, all City-owned parking lots shall be limited to twenty-four-hour parking. Notwithstanding the preceding sentence, the parking of commercial and recreational vehicles, as defined in § 211-15.1 of this chapter,<sup>1</sup> overnight in municipal parking lots is prohibited. Signs shall set forth the following language: "24 Hour Parking — Except for Commercial and Recreational Vehicles - All City-owned Parking Lots unless otherwise marked - Section 211-19.5."



1. Editor's Note: See § 211-15.2 for the definition of "recreational vehicle."